

**ADOT**



# 2050 Long-Range Transportation Plan

**ADOT**

Arizona Rural Transportation Summit  
October 19th, 2023



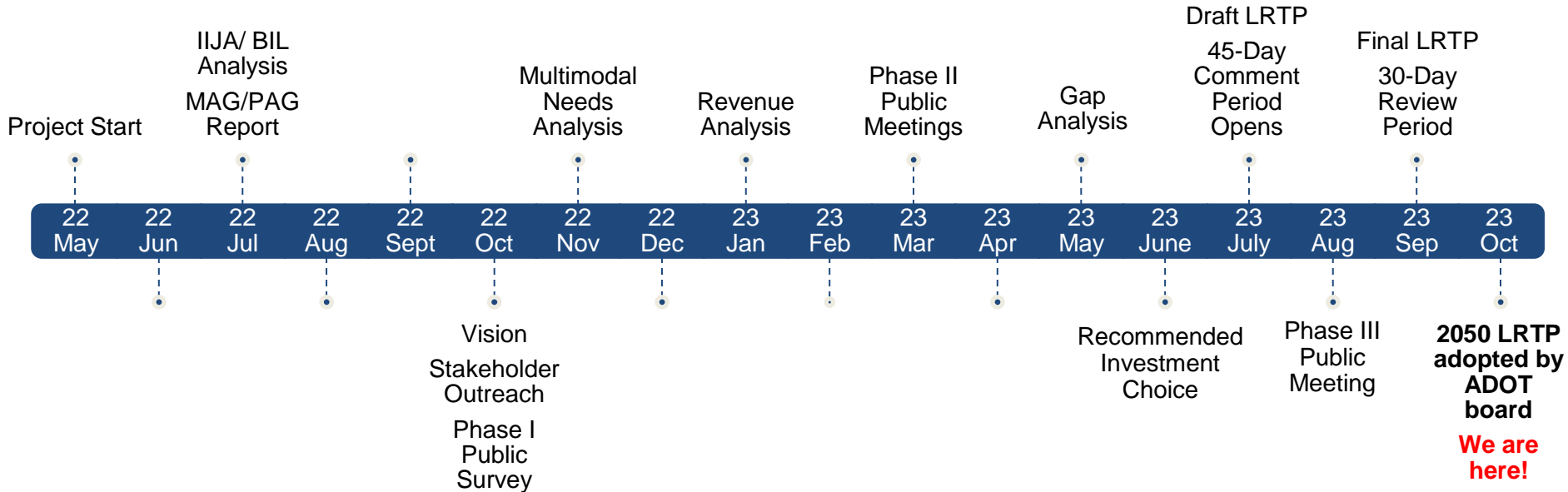
- Purpose of LRTP
- LRTP Findings
- What We Heard from the Public
- Recommended Investment Choice (RIC)

# Purpose of LRTP



- Policy document to guide transportation decisions for the next 25 years
- Updated every 5 years to reflect new conditions
- Identifies anticipated system needs, revenues and priorities
- Includes a Recommended Investment Choice (RIC) to guide how available funding should be allocated
- Does not identify specific projects





- ADOT Mission, Vision, and Values



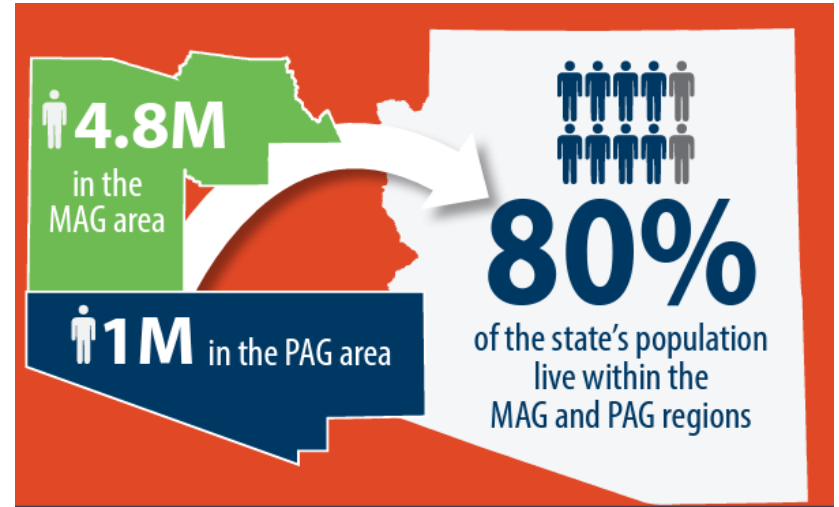
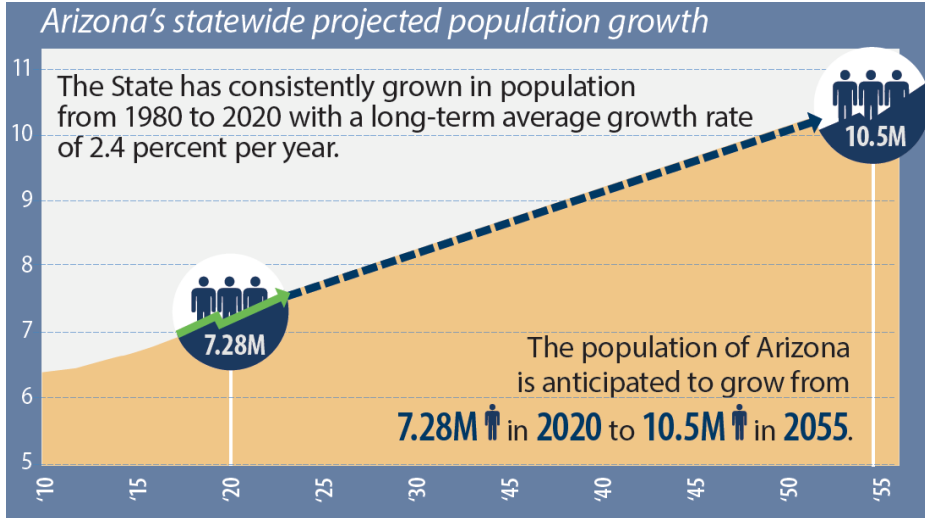
- L RTP Vision & Goals



# L RTP Findings



- 80% of Arizona’s population resides in Maricopa and Pima counties.
- Arizona’s population is expected to grow 44% by 2055.





**7,000**  
MILES OF

ADOT-OWNED ROADWAYS  
INTERSTATES, FREEWAYS  
& PRINCIPAL ARTERIALS

ACCOUNT FOR

**5%** ROADWAY  
MILES

ACCOMMODATE

**50%** OF VEHICLE  
MILES TRAVELED

LRTP *Vision Report* provides an overview of the various transportation systems and how usage will change over the next several decades.

- *LRTP includes transportation not overseen by ADOT.*

### BRIDGES

APPROXIMATELY

**8,500**

BRIDGES  
STATEWIDE

**57%**

ADOT-OWNED

### AVIATION

PUBLIC-USE  
AIRPORTS IN AZ

**67**

OF TOTAL COMMERCIAL  
AIR TRAVEL ...

### TRANSIT

**2** URBAN  
SYSTEMS

**5** SMALL URBAN  
SYSTEMS

**29** RURAL  
SYSTEMS



### FREIGHT



### TRUCKS

PROVIDE  
APPROXIMATELY

**70%**

OF TOTAL  
FREIGHT  
TRANSPORTED

### PORTS OF ENTRY (POE)

**9** ALONG  
MEXICO  
BORDER  
PROVIDING

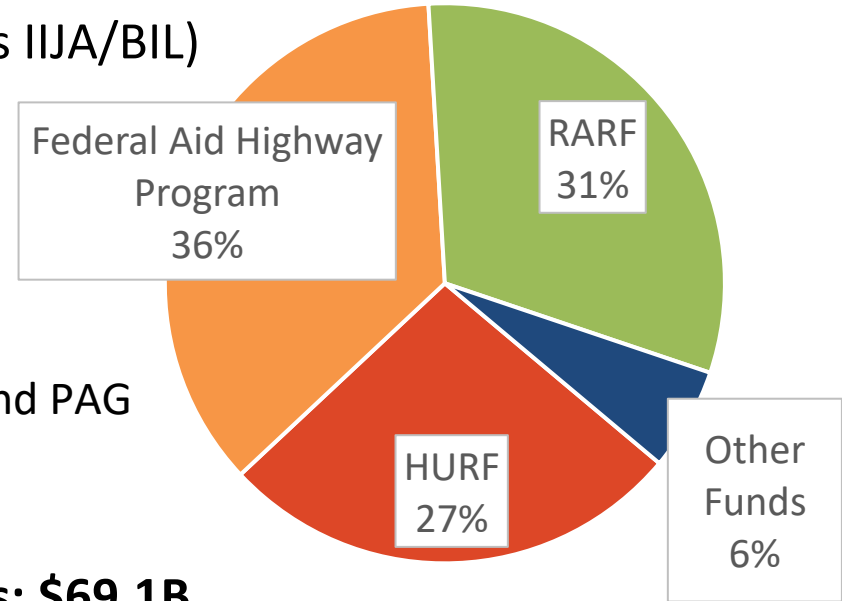
**\$30B**

OF GOODS



- Highway Revenue Fund (HURF)
  - Forecast: \$18.6 Billion
- Federal Aid Highway Program (includes IJJA/BIL)
  - Forecast: \$24.9 Billion
- Regional Area Road Fund (RARF)
  - Forecast: \$21.5 Billion
- Other Funds
  - Includes non-highway federal funds and PAG RMAP
  - Forecast: \$4.1 Billion
- **Total forecasted funding next 25 years: \$69.1B**

ADOT Funding Forecast



## MOMENTUM 2050 ANTICIPATES

**\$69.8B**

in revenue over the  
2022-2055 LRTP timeframe.

## 2045 RMAP ANTICIPATES

**\$15.1B**

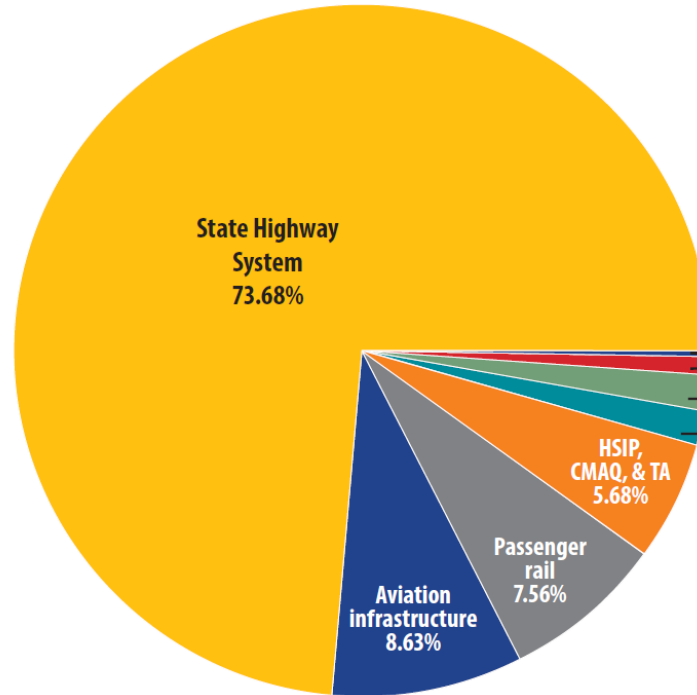
revenue over the  
2015-2045 LRTP timeframe.

- Voters in Maricopa and Pima counties passed sales taxes to fund transportation improvements.
- These include freeway, roadway, transit and bicycle/pedestrian improvements.

ADOT has varying levels of ownership and oversight of the following three major components of Arizona's transportation system:

- ADOT Infrastructure
- ADOT Stewardship
- Complementary Transportation Systems

**FUNDING NEEDS** (in percentages)



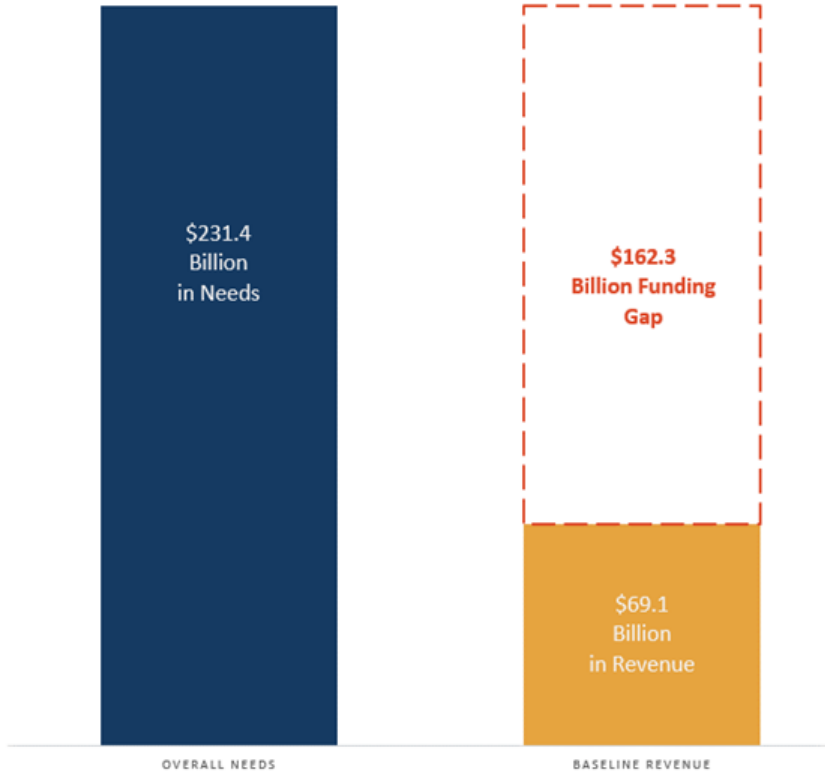
| TRANSPORTATION SYSTEM COMPONENT      | TOTAL NEEDS (2026 Dollars) |
|--------------------------------------|----------------------------|
| ADOT Infrastructure                  | \$174 Billion              |
| ADOT Stewardship                     | \$57 Billion               |
| Complementary Transportation Systems | Not Included               |
| <b>Total</b>                         | <b>\$231 Billion</b>       |





The following elements and their respective percentages are too small to show in the graph:

|                               |       |
|-------------------------------|-------|
| EV and CRP                    | 0.03% |
| Public at-grade rail crossing | 0.13% |
| Non-SHS bridge                | 0.36% |
| Statewide planning            | 0.76% |
| Transit                       | 1.49% |
| Other facilities              | 1.69% |

CMAQ: Congestion Mitigation and Air Quality Improvement  
 HSIP: Highway Safety Improvement Program  
 TA: Transportation Alternatives  
 EV: Electric Vehicle  
 CRP: Carbon Reduction Program





-  Large increase in construction cost
-  Increase in infrastructure needs
-  Decrease in the value of funding
-  Expansion of the funding gap



# What We Heard from the Public



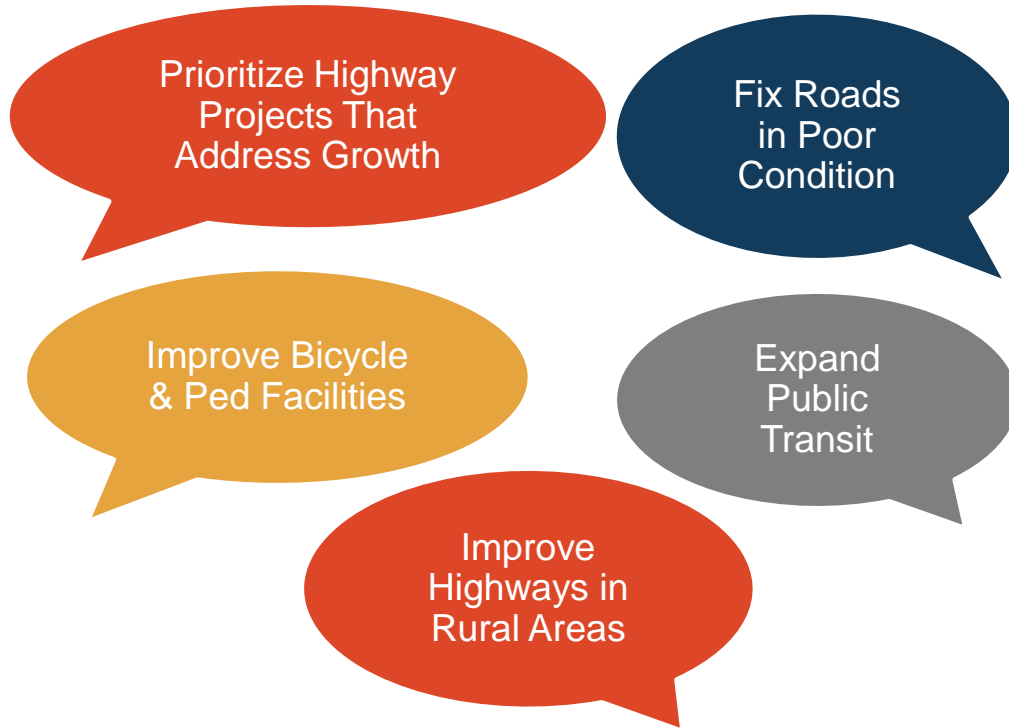
- **Phase I Public Survey of transportation goals and priorities**
  - 7,862 responses
- **Phase II In-person and virtual public meetings (March 2023)**
  - 693 attendees
  - 860 public comments
- **Phase III Virtual Public Meeting (Aug 2023)**
  - 67 attendees
  - 73 comments and questions
  - Draft LRTP survey: 111 responses with 485 individual comments



- Key stakeholder and partner meetings with agencies, tribes, MPOs/COGs
  - Outreach to all (22) Arizona Tribes, met with (11) Tribes and ITCA presentation
  - COG/MPO Partners – TAC Meetings, Executive Board Meetings, COG/MPO Planners Group Meeting

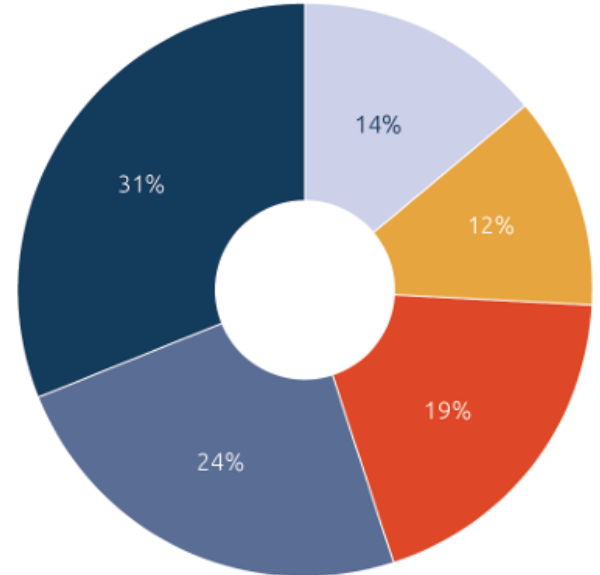






## Public Investment Priorities

- Preservation
- Modernization
- Innovation
- Accessibility
- Expansion



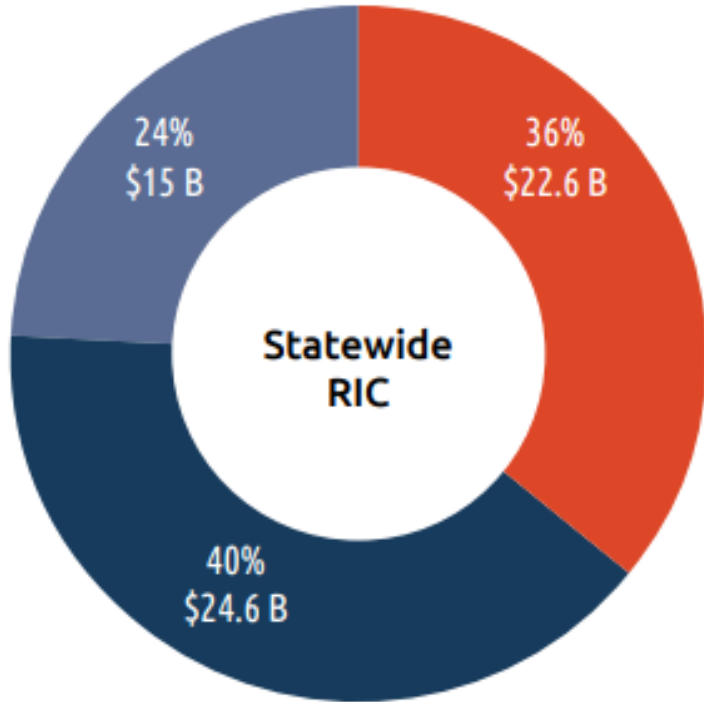
# Recommended Investment Choice (RIC)



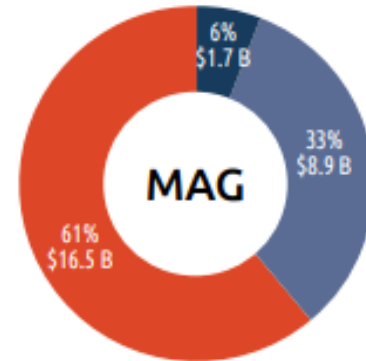
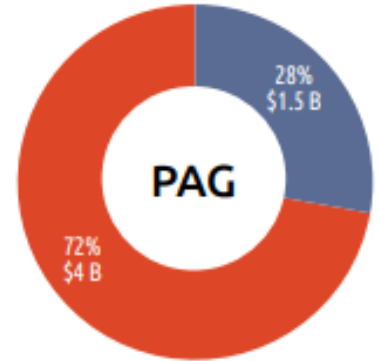
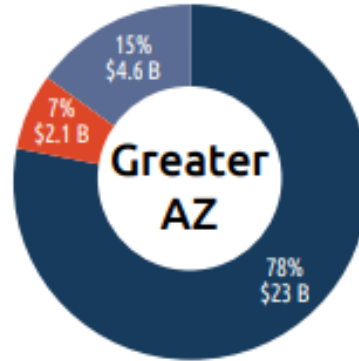
## Recommended Investment Choice (RIC) Categories:

- **Preservation:** Activities that improve or sustain the condition of road pavement and bridge facilities to a state of good repair.
- **Modernization:** Improvements to the existing system that upgrade efficiency, functionality and safety without adding capacity.
- **Expansion:** Improvements that add capacity through new roads, adding lanes to existing highway and constructing new interchanges.

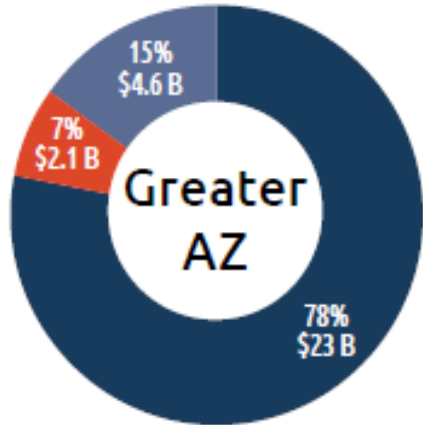




- Preservation
- Modernization
- Expansion



## Long Range Transportation Plan



- Preservation
- Modernization
- Expansion



## Planning to Programming (P2P)



## Five-Year Construction Program



- The Resiliency Improvement Plan (RIP) addresses the transportation system's ability to prepare, anticipate or adapt to changing conditions and disruptions from extreme weather and natural hazards.
- The RIP will increase share of federal funding for projects.



Project website: [adot2050plan.com](https://adot2050plan.com)

- View virtual meeting presentation
- View final documents



# Thank you!

ADOT LRTP PM contact information  
**Jason James, ADOT MPD**  
**602-712-6166, [jjames6@azdot.gov](mailto:jjames6@azdot.gov)**

