



**PINAL COUNTY**

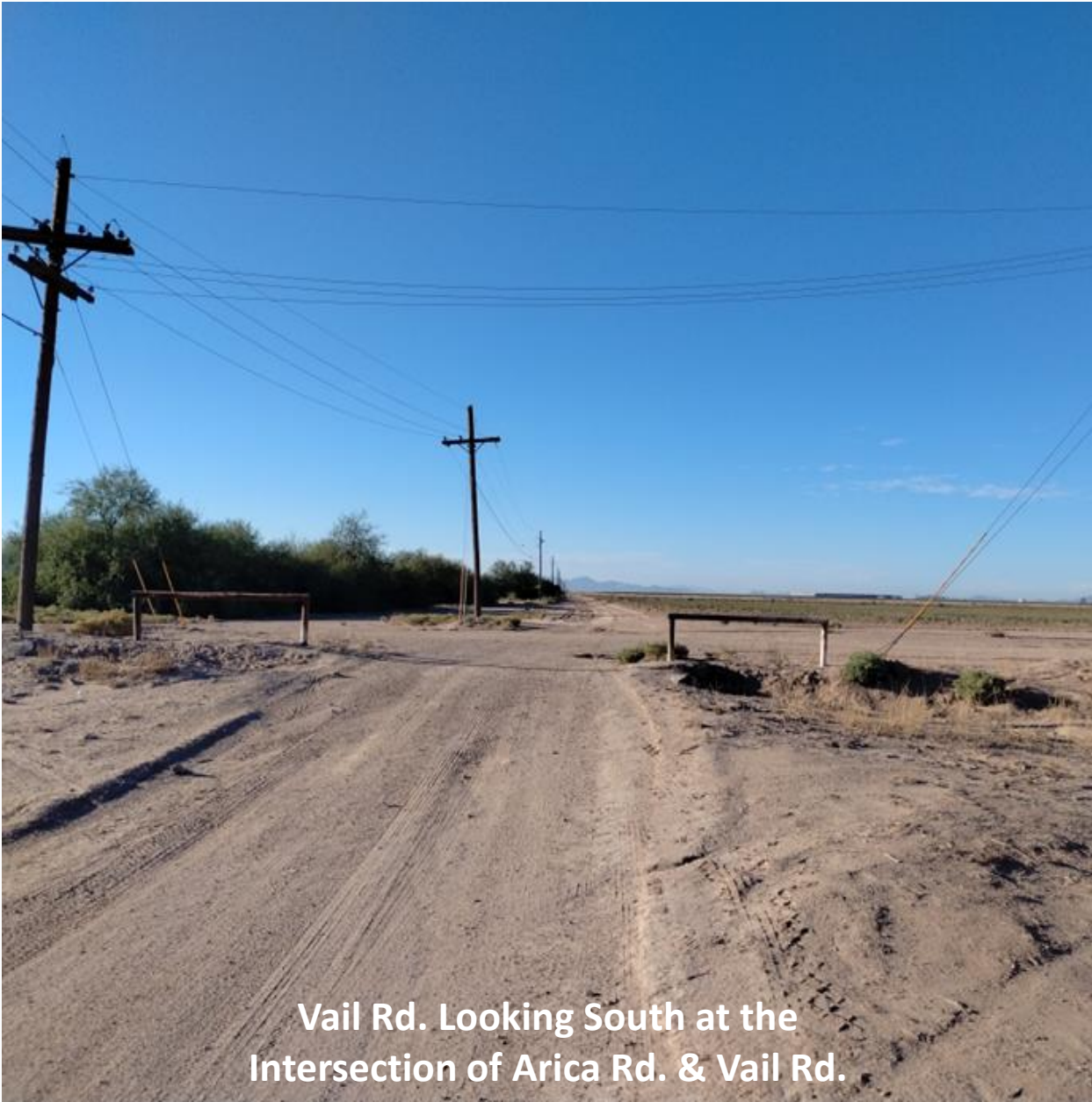
WIDE OPEN OPPORTUNITY

# Procter & Gamble Roadway Improvements

## Coolidge & Pinal County – SCMPO

- **Economic Development** – Project supports the new Procter & Gamble \$500 million manufacturing facility at the Inland Port AZ (IPAZ), which will create approximately 500 new jobs.
- **Mobility & Safety** - The roadways currently serve as limited unpaved two-lane roads of undivided traffic; improvements will significantly increase the traffic capacity and safety.
- **Regional Significance** - The IPAZ provides 2,700 acres of industrial property to develop.





**Vail Rd. Looking South at the Intersection of Arica Rd. & Vail Rd.**



**Vail Rd. Between Arica Rd. & Shedd Rd.**



Arica Rd. Looking West



Shedd Rd. Looking East From SR-87



Vail Rd.



Intersection of Vail Rd. & Shedd Rd.